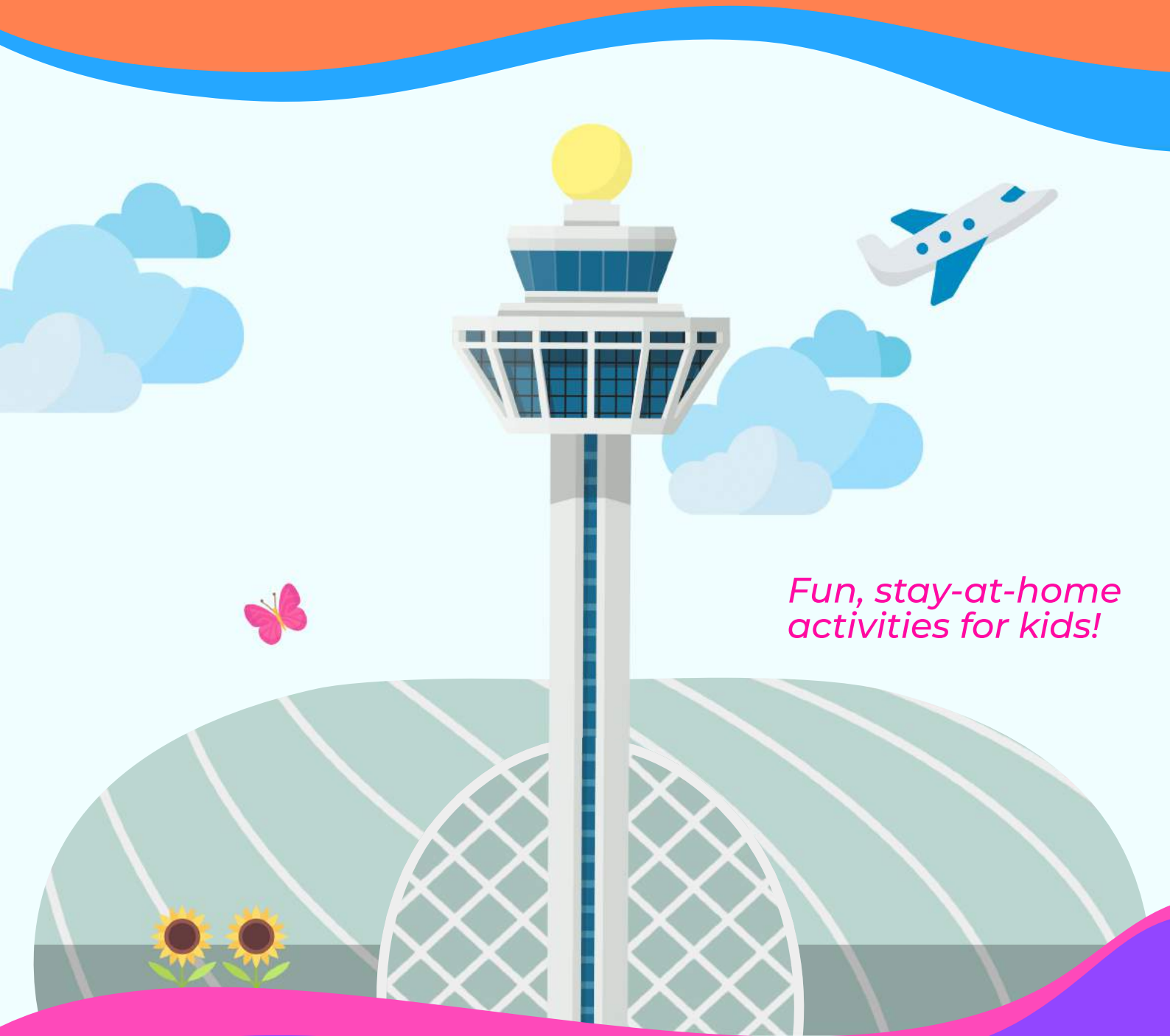


CHANGI KIDS CLUB

Activity Book for 7 to 10 year olds



*Fun, stay-at-home
activities for kids!*

Name

CONTENTS

Cover Page	1
Contents	2
Activities	
Baggage Handling Process	3 - 4
Crossword Puzzle	5 - 6
Equation games	7 - 9
Geo Challenge	10 - 11
Spot the Plane	12 - 13
Answers	
Baggage Handling	14
Crossword Puzzle	15
Equation Games	16
Geo Challenge	17 - 18
Spot the Plane	19
	20

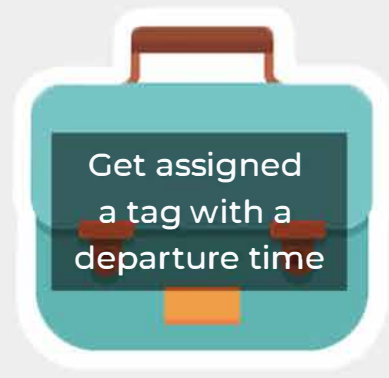


BAGGAGE HANDLING PROCESS



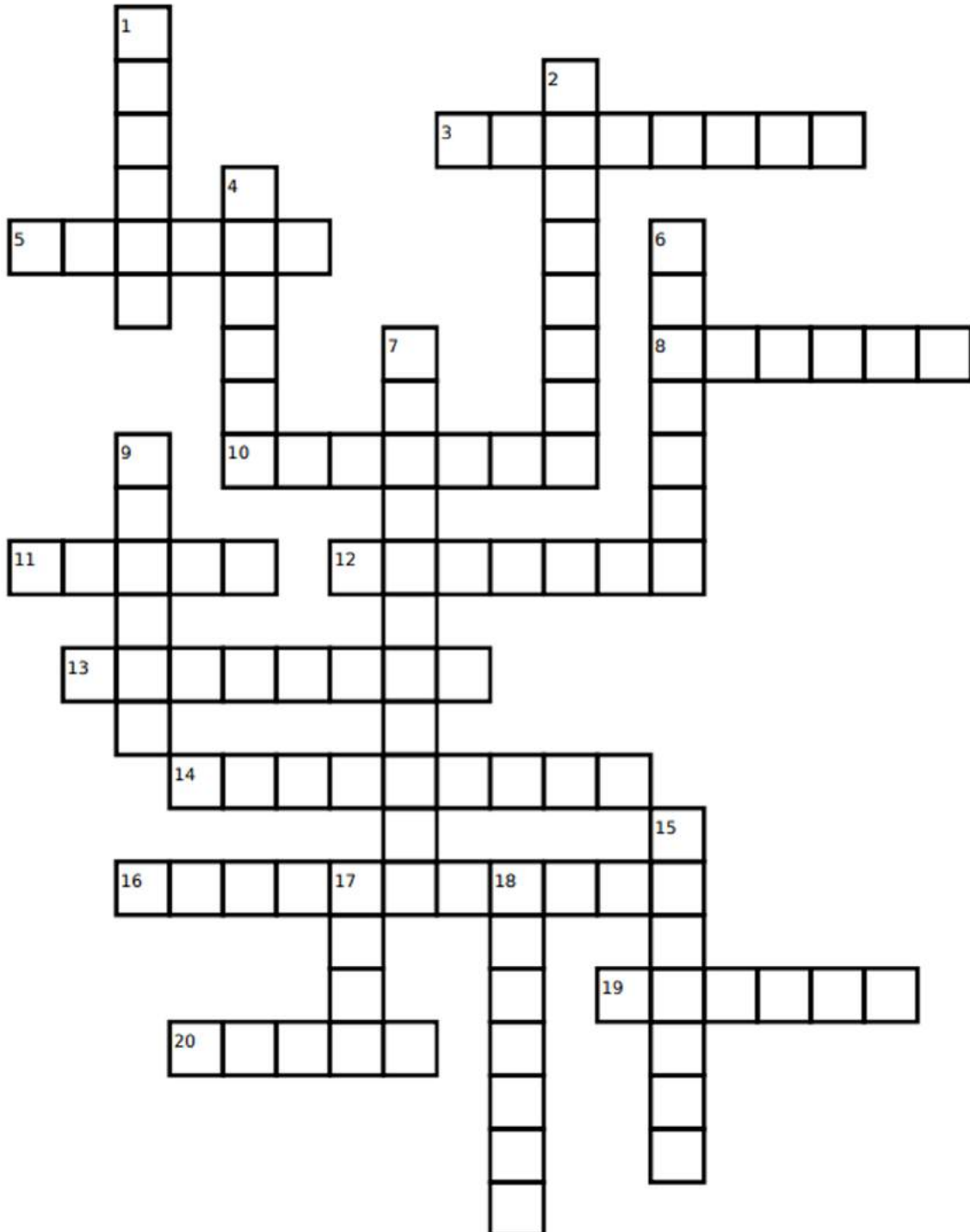
BAGGAGE HANDLING PROCESS

Cut out these baggages!



CROSSWORD PUZZLE

Complete the Changi-themed crossword puzzle!



Did you know?

From April 2018 to March 2019, there were over 66 million passengers that went through Changi Airport. That's more than 10 times the population of Singapore! Besides arriving or departing from Changi Airport, there are also many transiting passengers - they land at Changi Airport to take another flight towards another destination.

Clues are on the next page!

CROSSWORD PUZZLE

Clues

Down:

Aircraft facts

1. The American aircraft manufacturing company
6. The section of the plane where pilots control the plane from
7. The part of the plane that touches the floor first when landing
9. The European aircraft manufacturing company
15. The two cylinder-shaped machines on each wing
18. The process in which an aircraft leaves the ground

Changi facts

2. The document needed to leave or enter a country
4. The floors around Changi Airport's transit areas are covered with this
17. The area where passengers wait to board their flight

Across:

Aircraft facts

3. The equipment on each seat to keep passengers safe
5. The road where aircrafts take off
11. In addition to passengers and luggage, airplanes also carry this
12. The bent/folded tip of an aircraft's wing
13. The main body of an aircraft
19. Where passengers can look out from the aircraft

Changi facts

8. This is a prickly plant that is common in dry deserts and can be found in Terminal 1
10. The process in which passengers land at the airport to take another flight to another destination
14. There is a garden full of this flying colourful insect in Terminal 3
16. The zone where passengers' passports are stamped before they collect their luggage at arrival
20. The building with the Rain Vortex at Changi Airport

EQUATION GAMES

Solve the equations

1)

$$\text{🌸} + \text{🌸} + \text{🌸} = 90$$

$$\text{🌸} + \text{🌻🌻} + \text{🌻🌻} = 230$$

$$\text{🌺} + \text{🌻🌻} + \text{🌸} = 210$$

$$\text{🌻} - \text{🌸} + \text{🌺} = ?$$

2)

$$\text{🌻} + \text{🌻} = 36$$

$$\text{🌻} + \text{🌻} + \text{🌺🌺} = 60$$

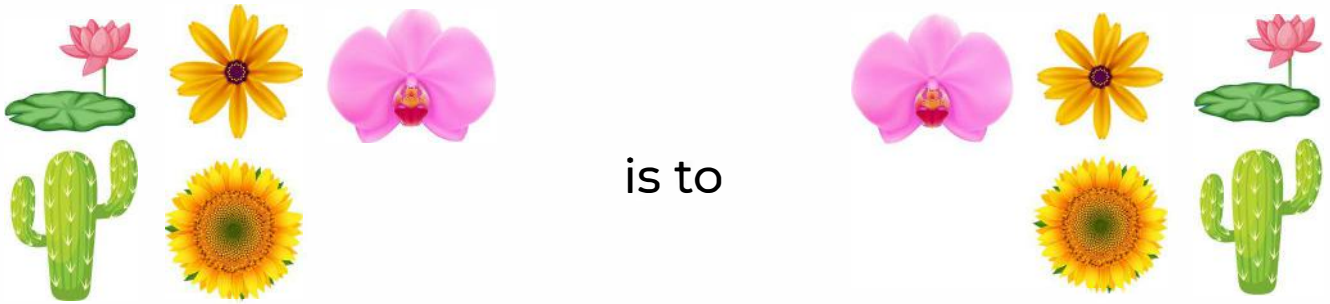
$$\text{🌵🌵} + \text{🌵} + \text{🌺} = 57$$

$$\text{🌻🌻} + \text{🌺🌺} - \text{🌵} = ?$$

EQUATION GAMES

Brain Teaser

3)



EQUATION GAMES

Fun facts about plants



Did you know?

Water lilies create shade and protection for fish in landscape ponds.



Did you know?

Daisies are found everywhere on Earth except Antarctica.



Did you know?

Changi Airport has our very own orchid called "Changi Airport Orchid" It was named after Changi Airport in May 1997 to commemorate the opening of the Orchid Garden in Terminal 2.



Did you know?

The average lifespan of a cactus plant is between 10 to 200 years.



Did you know?

Sunflower is the only flower with *flower* in its name!

GEO CHALLENGE

Complete the flipboard!

**Instructions are on the next page*

D E P A R T U R E S

TO

CH_N_

_AP__

_U_T__LI_

_O_T_ A___C_

G_____NY

C_N_D_

E _EA_A_D

__D_A

CHANGI AIRPORT

Guess the destination

a. Fill in the missing letters to name the countries

Match the flag

- a. Print out the sticker cut-outs
- b. Cut out the sticker cut-outs
- c. Using glue, paste the sticker cut-outs on the flight information display board



Did you know?

****Read only after finishing the activity*

China owns all the pandas in the world. Do you remember Kai Kai and Jia Jia? They travelled over 3,835km from China to be here with us!

Japan is Nihon or Nippon in Japanese, which means “the sun’s origin”.

Australia is both a country and a continent.

South Africa became the first African nation to host the World Cup in 2010.

Germany is home to these popular brands: Adidas, Nivea, BMW and Mercedes-Benz.

India is where chess was first invented.

Canada has the longest coastline in the world.

New Zealand’s North of Gisbone gets the world’s first sunrise everyday.

do not print this page double sided

PLANE SPOTTING

Read the information on planes below and help us to find them on the next page!



Boeing 747



Airbus A380

NARROW-BODY PASSENGER JETS

Narrow-body Passenger Jets have a single-deck and only a single aisle (walkway) on the inside. The only way to tell these from the outside is to compare their sizes to Jumbo Jets, as these planes are much smaller! These aircrafts include the Boeing 737 and Airbus A320.



Boeing 737



Airbus A320

TURBOPROP



ATR-72

Passenger Turboprops have propellers (blades that look like fans) that are visible on the outside, as circled on the diagram. They are some of the smallest aircrafts at Changi Airport, and you'll most likely be looking at the ATR-72 if you spot one!

CARGO JETS

Cargo Jets come in various sizes, from smaller to bigger jets! The way to spot them is to see the number of windows they have. If they only have a few windows, they are most likely carrying cargo instead of passengers. One example of a cargo plane is the Boeing 747F.



Boeing 747F

SPOT THE PLANES

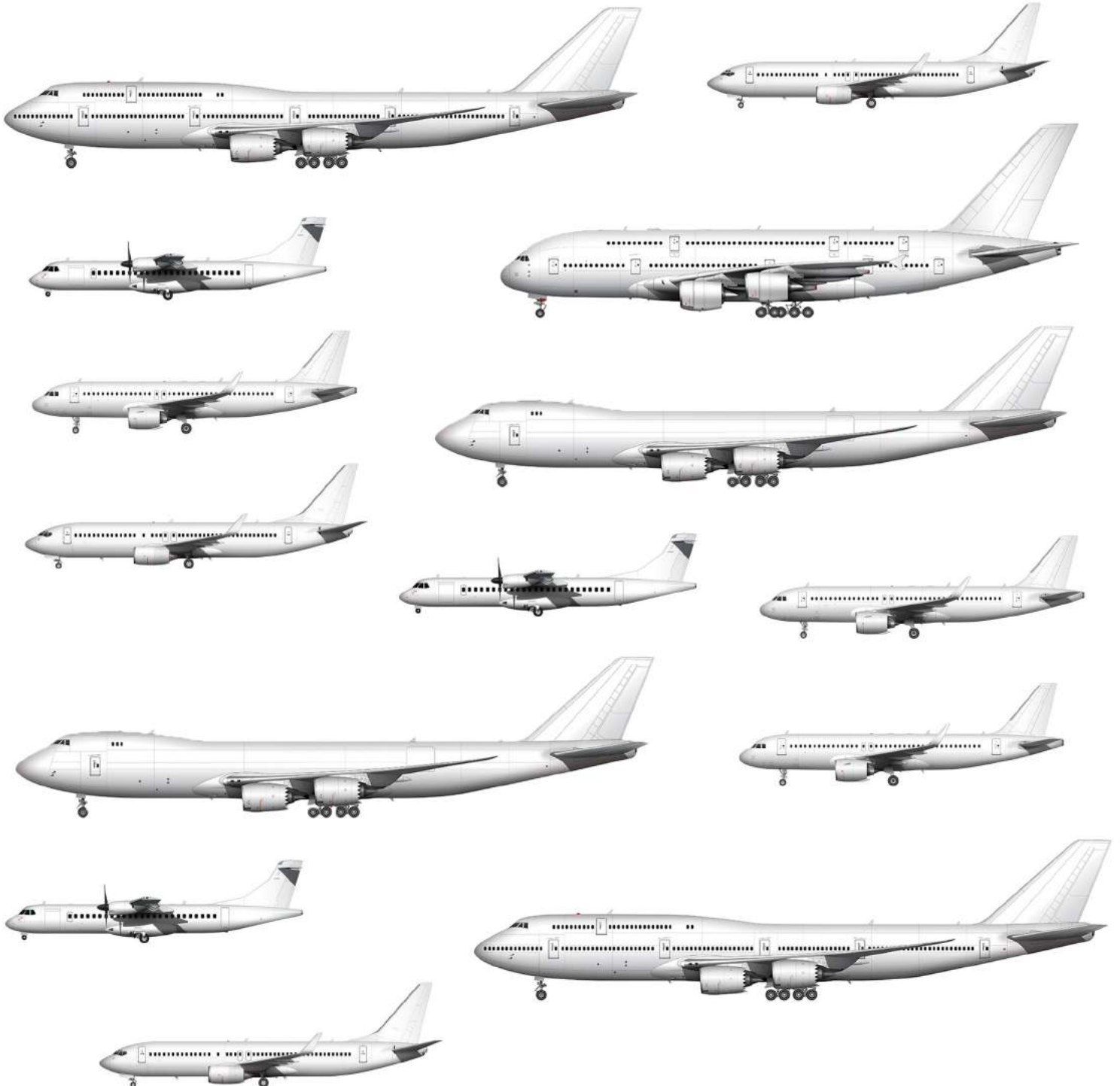
Circle the planes in different colours
according to their types!

Circle Jumbo Passenger Jets in **blue**

Circle Narrow-body Passenger Jets in **red**

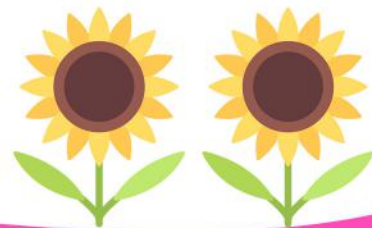
Circle Turboprops in **black**

Circle Cargo Jets in **green**





ANSWERS



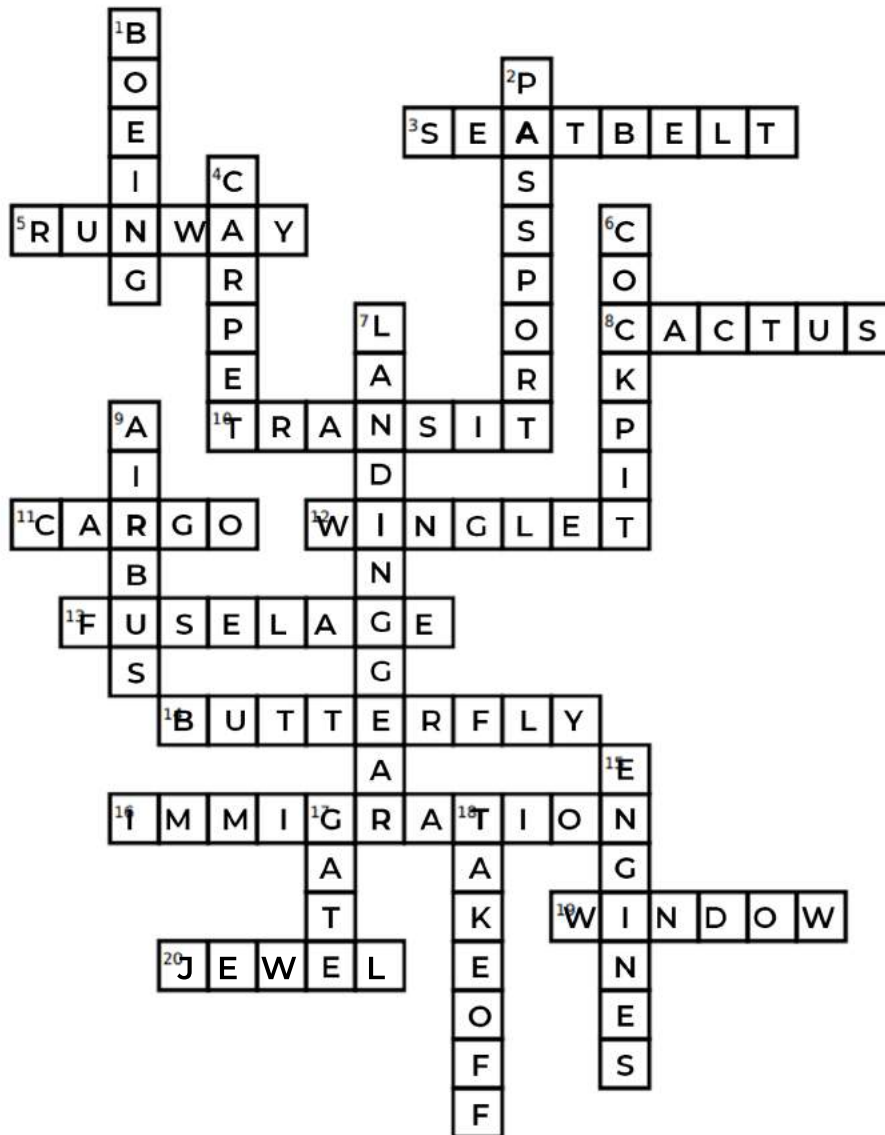
BAGGAGE HANDLING PROCESS

Answer Key



CROSSWORD PUZZLE

Answer key



Down:

Aircraft facts

1. The American aircraft manufacturing company
6. The section of the plane where pilots control the plane from
7. The part of the plane that touches the floor first when landing
9. The European aircraft manufacturing company
15. The two cylinder-shaped machines on each wing
18. The process in which an aircraft leaves the ground

Changi facts

2. The document needed to leave or enter a country
4. The floors around Changi Airport's transit areas are covered with this
17. The area where passengers wait to board their flight

Across:

Aircraft facts

3. The equipment on each seat to keep passengers safe
5. The road where aircrafts take off
11. In addition to passengers and luggage, airplanes also carry this
12. The bent/folded tip of an aircraft's wing
13. The main body of an aircraft
19. Where passengers can look out from the aircraft

Changi facts

8. This is a prickly plant that is common in dry deserts and can be found in Terminal 1
10. The process in which passengers land at the airport to take another flight to another destination
14. There is a garden full of this flying colourful insect in Terminal 3
16. The zone where passengers' passports are stamped before they collect their luggage at arrival
20. The building with the Rain Vortex at Changi Airport

EQUATION GAMES

Answer Key

1)

$$\text{Orchid} + \text{Orchid} + \text{Orchid} = 90$$

value of one Orchid is $90 \div 3 = 30$

$$\text{Orchid} + 2 \times \text{Sunflower} + 2 \times \text{Sunflower} = 230$$

value of one Sunflower is $(230 - 30) \div 4 = 50$

$$\text{Water Lily} + 2 \times \text{Sunflower} + \text{Orchid} = 210$$

value of one Water Lily is $210 - (50 \times 2) - 30 = 80$

$$\text{Sunflower} - \text{Orchid} + \text{Water Lily} = 100$$

50 30 80

2)

$$2 \times \text{Daisy} = 36$$

value of one Daisy is $36 \div 2 = 18$

$$\text{Daisy} + \text{Daisy} + 2 \times \text{Water Lily} = 60$$

value of one Water Lily is $(60 - 36) \div 2 = 12$

$$3 \times \text{Cactus} + \text{Water Lily} = 57$$

value of one Cactus is $(57 - 12) \div 3 = 15$

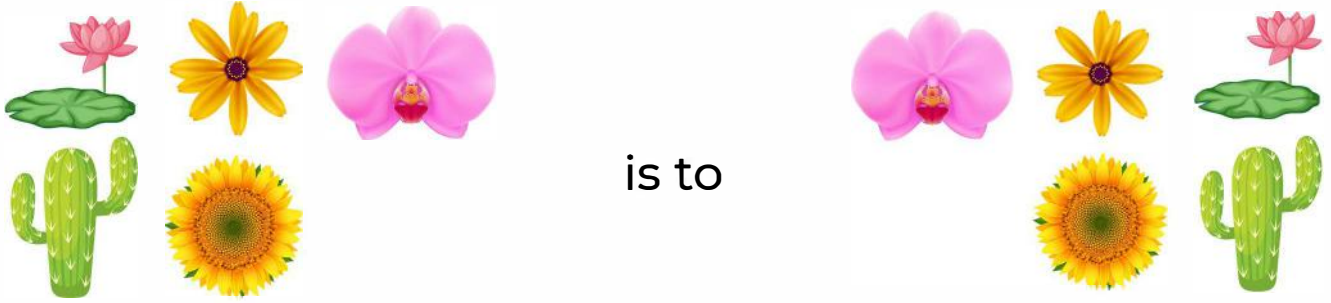
$$2 \times \text{Daisy} + 2 \times \text{Water Lily} - \text{Cactus} = 45$$

36 24 15

EQUATION GAMES

Answer Key

3)



GEO CHALLENGE

Answer Key

DEPARTURES

TO



CHINA



JAPAN



AUSTRALIA



SOUTH AFRICA



GERMANY



CANADA



NEW ZEALAND



INDIA

CHANGI AIRPORT

SPOT THE PLANES

Answer Key

- Circle Jumbo Passenger Jets in blue
- Circle Narrow-body Passenger Jets in red
- Circle Turboprops in black
- Circle Cargo Jets in green

